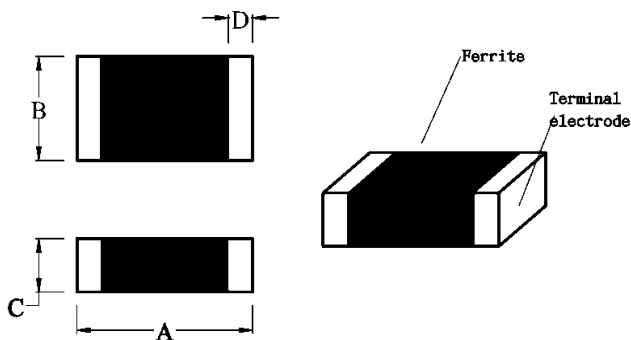


## FEATURES

- ◆ JCB series offer full specification for your choices.
- Wide impedance characteristic and several size support you easy to design

## APPLICATIONS

- ◆ Communications
- ◆ Computer products, etc....
- ◆ VCR and cameras
- ◆ Noise suppression in digital equipments



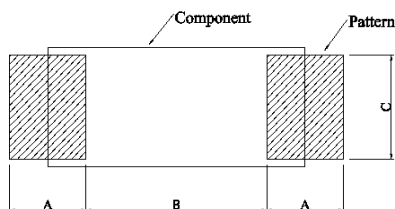
## DIMENSIONS (mm)

Part No.	Size (mm)			
	A	B	C	D
JCB 453215 (1812)	$4.5 \pm 0.2$	$3.2 \pm 0.2$	$1.5 \pm 0.2$	$0.5 \pm 0.3$

No.	Part No.	Impedance ( $\Omega$ )	Test Frequency (MHz)	RDC ( $\Omega$ ) (MAX)	IDC (mA) (MAX)
1	JCB 453215-800	$80 \pm 25\%$	100	0.30	300
2	JCB 453215-131	$130 \pm 25\%$	100	0.30	300

## RECOMMENDED PATTERN (mm)

Type	A	B	C
JCB 453215	1.50	3.00	3.00

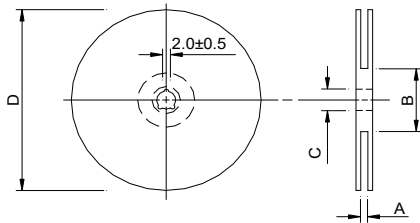


## PACKAGE

Type	JCB 453215
Q'TY/Reel	1000

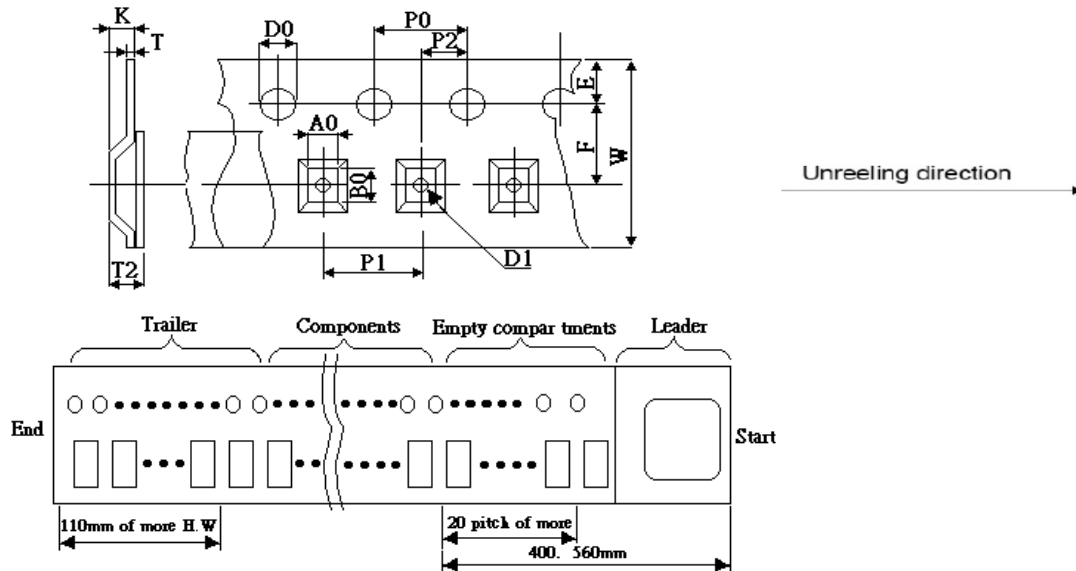
## Packaging Information

### • Reel Dimension



A(mm)	B(mm)	C(mm)	D(mm)
14±1.5	50 min.	13±0.8	178±2

### • Tape Dimension



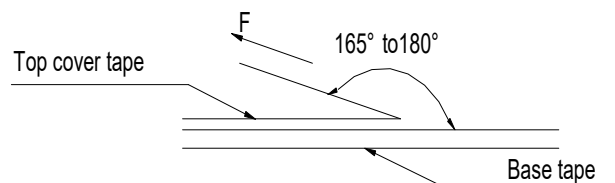
A0(mm)	B0(mm)	W(mm)	F(mm)	E(mm)	P1(mm)	P2(mm)	P0(mm)	D0(mm)	D1(mm)	K(mm)	T(mm)	T2(mm)
3.66±0.1	4.95±0.1	12.0±0.2	5.5±0.05	1.75±0.1	8.0±0.1	2.0±0.05	4.0±0.1	1.55±0.05	1.5±0.1	1.85±0.1	0.23±0.1	1.83±0.1

### • Packaging Quantity

Size	Reel
JCB 453215	1000

### • Tearing Off Force

The force for tearing off cover tape is 10 to 100 grams in the arrow direction under the following conditions (referenced ANSI/EIA-481-D-2008 of 4.11 standard).



Tearing Speed mm	Room Temp (°C)	Room Humidity (%)	Room atm (hPa)
300±10%	5~35	45~85	860~1060

## ■ Application Notice

### • STORAGE

1. The solderability of the external electrode may be deteriorated if packages are stored where they are exposed to high humidity. Packages must be stored at 40°C or less and 70% RH or less.
2. The solderability of the external electrode may be deteriorated if packages are stored where they are exposed to dust or harmful gas (hydrogen chloride, sulfurous acid gas or hydrogen sulfide).
3. Packaging material may be deformed if packages are stored where they are exposed to heat or direct sun — light.
4. Minimum packages, such as polyvinyl heat — seal packages shall not be opened until just before they are used. If opened, use the reels as soon as possible.
5. Recommended products should be used within 6 months form the time of delivery. For those parts which passed more than 6 months shall be checked solderability before it is used.

### • Transportation

Care should be taken when transporting or handling product to avoid excessive vibration or mechanical shock.