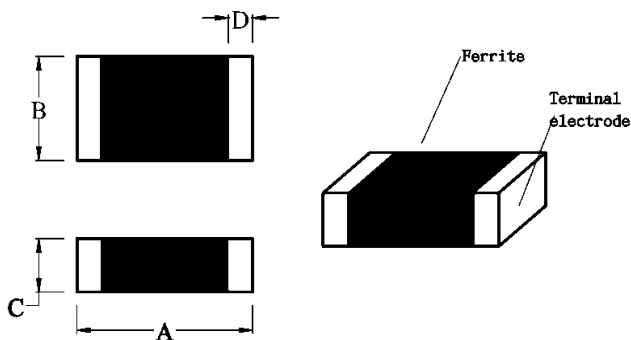


FEATURES

- ◆ JCB series offer full specification for your choices.
- Wide impedance characteristic and several size support you easy to design

APPLICATIONS

- ◆ Communications
- ◆ Computer products, etc....
- ◆ VCR and cameras
- ◆ Noise suppression in digital equipments



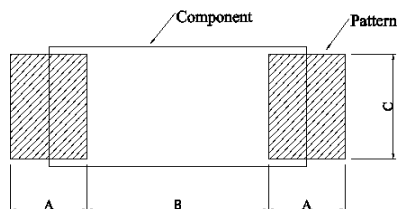
DIMENSIONS (mm)

Part No.	Size (mm)			
	A	B	C	D
JCB 322513 (1210)	3.2 ± 0.2	2.5 ± 0.2	1.3 ± 0.2	0.5 ± 0.3

No.	Part No.	Impedance (Ω)	Test Frequency (MHz)	RDC (Ω) (MAX)	IDC (mA) (MAX)
1	JCB 322513-520	$52 \pm 25\%$	100	0.30	400
2	JCB 322513-600	$60 \pm 25\%$	100	0.30	400
3	JCB 322513-900	$90 \pm 25\%$	100	0.40	300

RECOMMENDED PATTERN (mm)

Type	A	B	C
JCB 322513	1.10	2.20	2.30

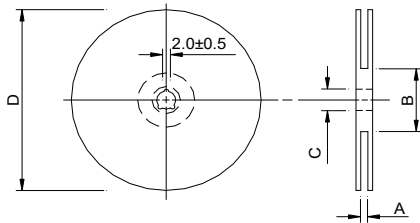


PACKAGE

Type	JCB 322513
Q'TY/Reel	2000

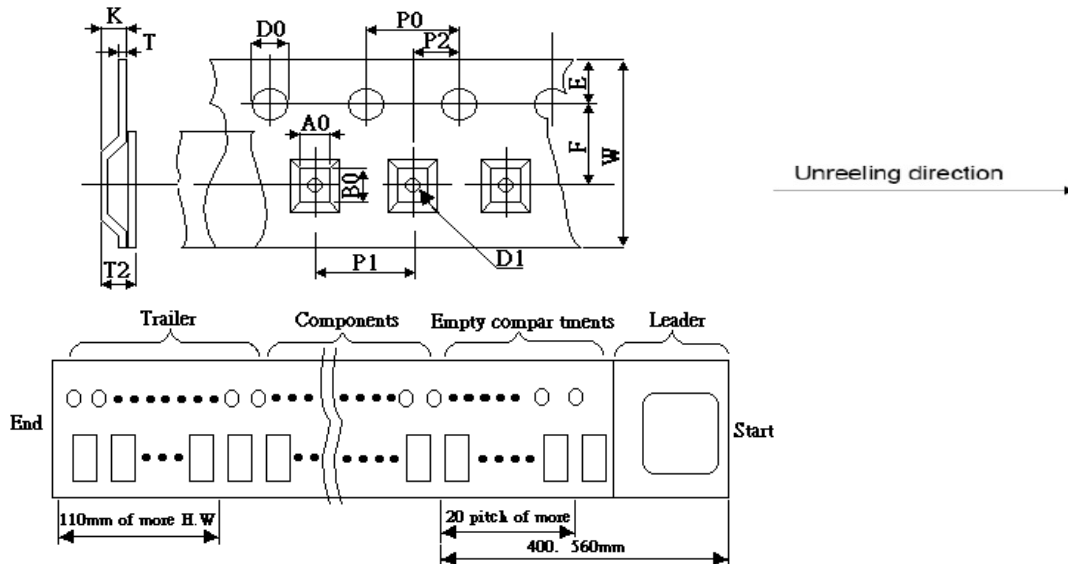
Packaging Information

• Reel Dimension



A(mm)	B(mm)	C(mm)	D(mm)
10±1.5	50 min.	13±0.8	178±2

• Tape Dimension



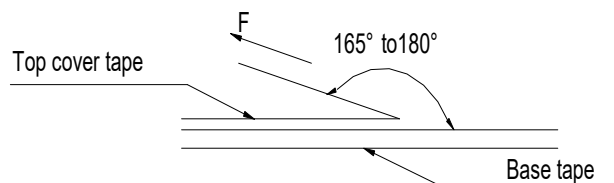
A0(mm)	B0(mm)	W(mm)	F(mm)	E(mm)	P1(mm)	P2(mm)	P0(mm)	D0(mm)	D1(mm)	K(mm)	T(mm)	T2(mm)
2.9±0.1	3.5±0.1	8.0±0.2	3.5±0.05	1.75±0.1	4.0±0.1	2.0±0.05	4.0±0.1	1.5±0.05	1.0±0.1	1.55±0.1	0.23±0.1	1.4±0.1

• Packaging Quantity

Size	Reel
JCB 322513	2000

• Tearing Off Force

The force for tearing off cover tape is 10 to 100 grams in the arrow direction under the following conditions (referenced ANSI/EIA-481-D-2008 of 4.11 standard).



Tearing Speed mm	Room Temp (°C)	Room Humidity (%)	Room atm (hPa)
300±10%	5~35	45~85	860~1060

■ Application Notice

• STORAGE

1. The solderability of the external electrode may be deteriorated if packages are stored where they are exposed to high humidity. Packages must be stored at 40°C or less and 70% RH or less.
2. The solderability of the external electrode may be deteriorated if packages are stored where they are exposed to dust or harmful gas (hydrogen chloride, sulfurous acid gas or hydrogen sulfide).
3. Packaging material may be deformed if packages are stored where they are exposed to heat or direct sun — light.
4. Minimum packages, such as polyvinyl heat — seal packages shall not be opened until just before they are used. If opened, use the reels as soon as possible.
5. Recommended products should be used within 6 months from the time of delivery. For those parts which passed more than 6 months shall be checked solderability before it is used.

• Transportation

Care should be taken when transporting or handling product to avoid excessive vibration or mechanical shock.